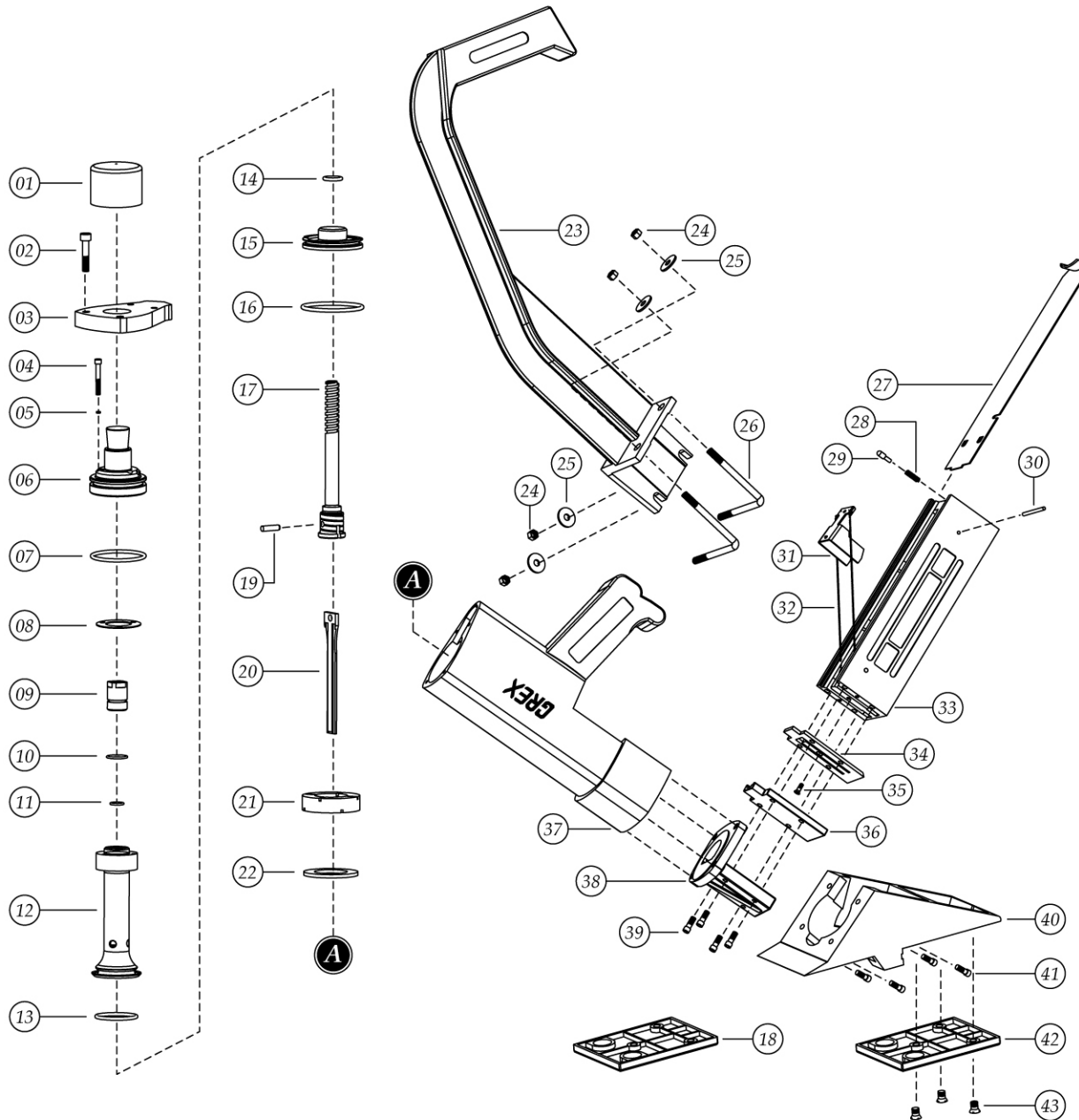


# GreX MS1250

1" ~ 2" Length Pneumatic Flooring Stapler

## EXPLODED DIAGRAM



Ref. No.	Part No.	Description
01	125001	Hammer cap
02	125002	Cap screw (10-24 x 5/8 SHCS)
03	125003	Cap
04	125004	Actuator screw (8-32 x 5/8 SHCS)
05	125005	Washer
06	125006	Actuator
07	125007	O-ring (1.859 x .139)
08	125008	Cylinder gasket
09	125009	Plunger
10	125010	O-ring (.614 x .070)
11	125011	O-ring (.489 x .070)
12	125012	Cylinder
13	125013	O-ring
14	125014	O-ring (.487 x .103)
15	125015	Piston
16	125016	O-ring (1.984 x .139)
17	125017	Piston rod
18	125018	1/4" thin Foot Pad
19	125019	Dowel pin (.250 x .75)
20	125020	Driver
21	125021	Bumper
22	125022	Bumper plate
23	125023	Handle
24	125024	Lock nut (1/4-20 ESN)
25	125025	Washer (1/4 USS flat BLKZ)
26	125026	Clamp screw
27	125027	Magazine cover
28	125028	Latch pin spring
29	125029	Magazine cover latch pin
30	125030	Spring pin
31	125031	Pusher
32	125032	Pusher spring
33	125033	Magazine assembly
34	125034	Guide plate
35	125035	Plate guide screw (3-32 x 8/3 SFHCS)
36	125036	Driver guide
37	125037	Main body
38	125038	Nose
39	125039	Nose screw (10-24 x 1 SHCS)
40	125040	Foot
41	125041	Foot screw (1/4-20 x 1-1/4 SHCS)
42	125042	5/16" thick Foot Pad
43	125043	Screw (1/4-20 x 1/2 SFHCS)